

# The Terrace at RiverPlace

**Class A Office Space Available for Lease**

**201 Riverplace, Suite 400  
Greenville, South Carolina**



**17,985 SQUARE FEET AVAILABLE**

**RARE OPPORTUNITY TO LEASE EXCLUSIVE CLASS A OFFICE SPACE IN THE HIGHLY COVETED RIVERPLACE DEVELOPMENT IN DOWNTOWN GREENVILLE!**

**WITH ABUNDANT WINDOW LINES, OPEN FLOOR PLAN AND INCREDIBLE EXECUTIVE CORNER OFFICES OVERLOOKING THE REEDY RIVER & SWAMP RABBIT TRAIL THIS IS A RARE OPPORTUNITY TO LEASE A ONE OF A KIND CLASS-A OFFICE SPACE IN THE BOOMING WEST END OF DOWNTOWN GREENVILLE.**

**FOR MORE INFORMATION CONTACT:**

**Ryan Peiffer**

**864.242.2100 (Office) 864.991.7147 (Mobile)**

**Ryan@HughesInvestments.com**



**The Terrace at RiverPlace is located in downtown Greenville on the Reedy River and directly across from the newly renovated Peace Center for Performing Arts and the TD Ampitheatre. The building is served by a large public underground garage which provides covered parking and ultra convenient access without having to deal with the elements.**



**FOR MORE INFORMATION CONTACT:  
RYAN PEIFFER  
864.242.2100 (office) 864.991.7147 (cell)  
Ryan@HughesInvestments.com**

**[www.hughesinvestments.com](http://www.hughesinvestments.com)**





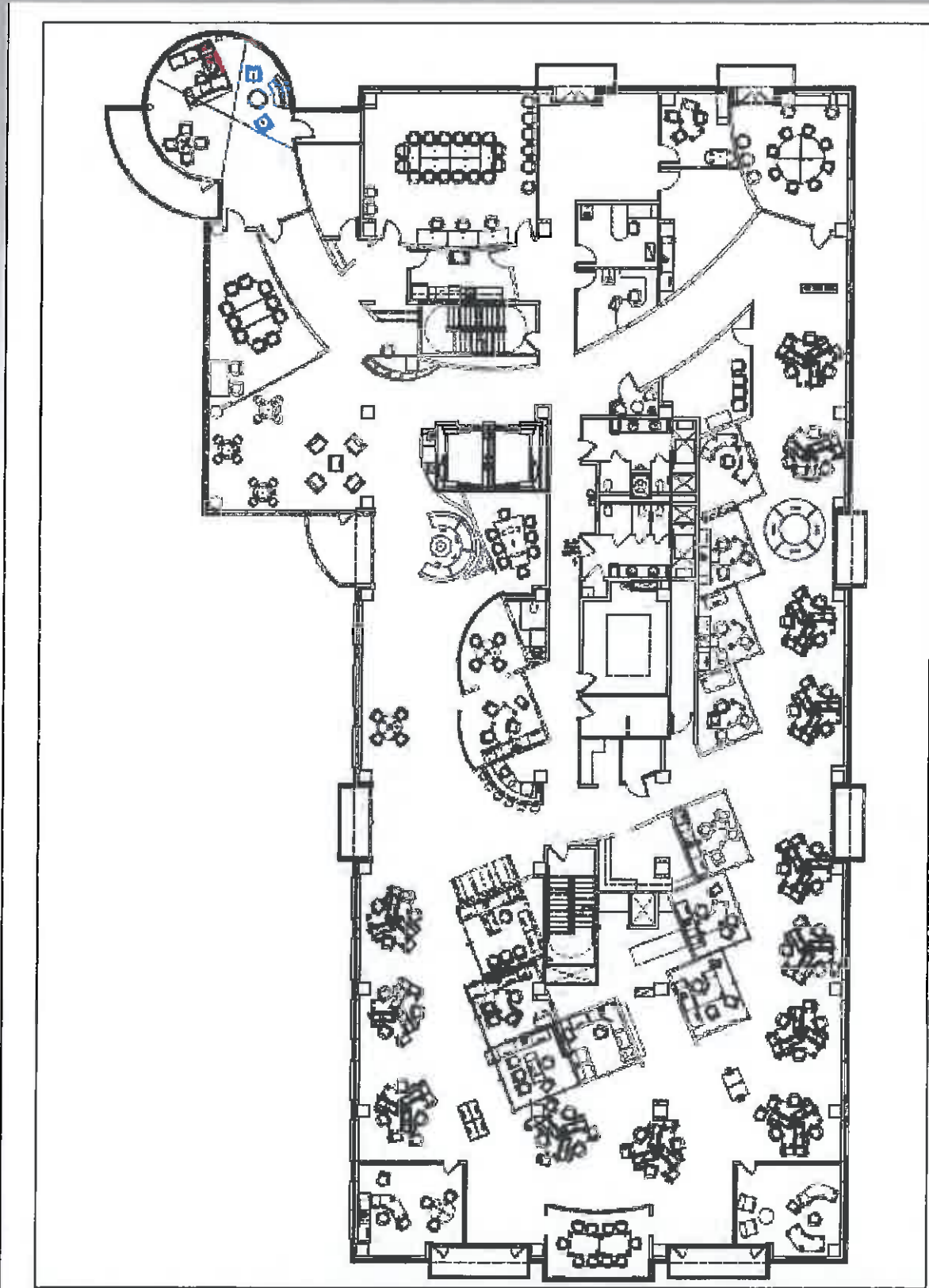
## Space Features:

- ◆ Large board room with audio/video equipment included
- ◆ Server room with supplemental HVAC
- ◆ Open floorplan with corner offices
- ◆ Upgraded IT infrastructure and cabling with UPS
- ◆ New back-up emergency generator dedicated to just the 4th floor.
- ◆ Private access via video monitoring at building entrance. Tenant can lock down the floor at Tenants option
- ◆ Large break area with all stainless steel appliances
- ◆ Separate coffee / bar area
- ◆ Space includes furniture, fixtures, and equipment!!

FOR MORE INFORMATION CONTACT:  
RYAN PEIFFER  
864.242.2100 (office) 864.991.7147 (cell)  
Ryan@HughesInvestments.com

[www.hughesinvestments.com](http://www.hughesinvestments.com)

# Floor Plan



FOR MORE INFORMATION CONTACT:  
RYAN PEIFFER  
864.242.2100 (office) 864.991.7147 (cell)  
Ryan@HughesInvestments.com

[www.hughesinvestments.com](http://www.hughesinvestments.com)



FOR MORE INFORMATION CONTACT:  
RYAN PEIFFER  
864.242.2100 (office) 864.991.7147 (cell)  
Ryan@HughesInvestments.com

[www.hughesinvestments.com](http://www.hughesinvestments.com)





FOR MORE INFORMATION CONTACT:  
RYAN PEIFFER  
864.242.2100 (office) 864.991.7147 (cell)  
Ryan@HughesInvestments.com

[www.hughesinvestments.com](http://www.hughesinvestments.com)



FOR MORE INFORMATION CONTACT:  
**RYAN PEIFFER**  
864.242.2100 (office) 864.991.7147 (cell)  
Ryan@HughesInvestments.com

[www.hughesinvestments.com](http://www.hughesinvestments.com)





FOR MORE INFORMATION CONTACT:  
RYAN PEIFFER  
864.242.2100 (office) 864.991.7147 (cell)  
Ryan@HughesInvestments.com

[www.hughesinvestments.com](http://www.hughesinvestments.com)





FOR MORE INFORMATION CONTACT:  
RYAN PEIFFER  
864.242.2100 (office) 864.991.7147 (cell)  
Ryan@HughesInvestments.com

[www.hughesinvestments.com](http://www.hughesinvestments.com)



FOR MORE INFORMATION CONTACT:  
RYAN PEIFFER  
864.242.2100 (office) 864.991.7147 (cell)  
Ryan@HughesInvestments.com

[www.hughesinvestments.com](http://www.hughesinvestments.com)





FOR MORE INFORMATION CONTACT:  
**RYAN PEIFFER**  
864.242.2100 (office) 864.991.7147 (cell)  
Ryan@HughesInvestments.com

[www.hughesinvestments.com](http://www.hughesinvestments.com)



FOR MORE INFORMATION CONTACT:  
**RYAN PEIFFER**  
864.242.2100 (office) 864.991.7147 (cell)  
Ryan@HughesInvestments.com

[www.hughesinvestments.com](http://www.hughesinvestments.com)