

FOR LEASE

OFFICE PARK PATEWOOD

PATEWOOD 1

30 PATEWOOD DRIVE

SITE #1420 Greenville, SC 29615



OFFICE SPACE FOR LEASE

±994 RSF - ±27,455 RSF AVAILABLE

Patewood 1 is located inside a ±448,000 square foot Class A office park with I-385 frontage, minutes from downtown Greenville.

- + ±56,738 Total SF
- + 3 Floors
- + Located in Greenville County only
- + Excellent exposure from I-385
- + Parking: 4/1,000 RSF
- + On-site Fitness Center & Tenant Lounge
- + Leasing Opportunities:
 - ±1,916 SF | Suite 115
 - ±3,115 SF | Suite 150
 - ±994 SF | Suite 153
 - ±21,430 SF | Suite 300



CONTACT US

CHARLES GOUCH, CCIM, SIOR

Senior Vice President
+1 864 527 6035
charles.gouch@cbre.com

BLAINE HART, SIOR

First Vice President
+1 864 527 6054
blaine.hart@cbre.com

SHELBY DODSON, LEED AP

Vice President
+1 864 527 6022
shelby.dodson@cbre.com

www.cbre.com/greenville

CBRE

FOR LEASE PATEWOOD 1

SITE #1420
30 PATEWOOD DRIVE
 Greenville, SC 29615

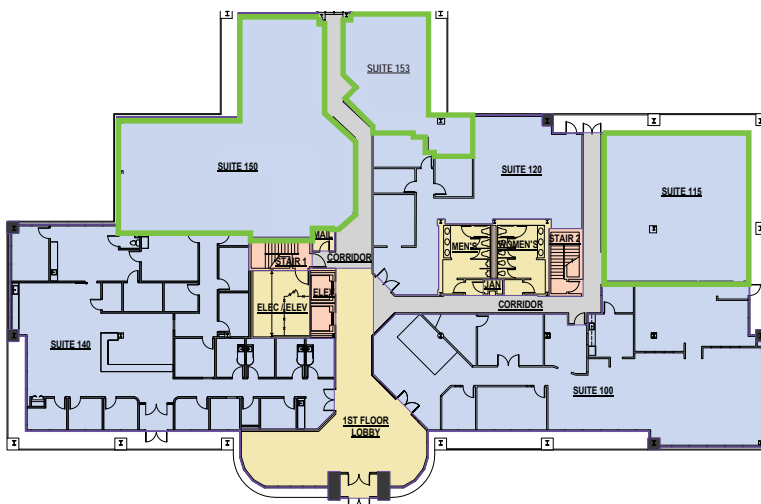


FLOOR PLAN

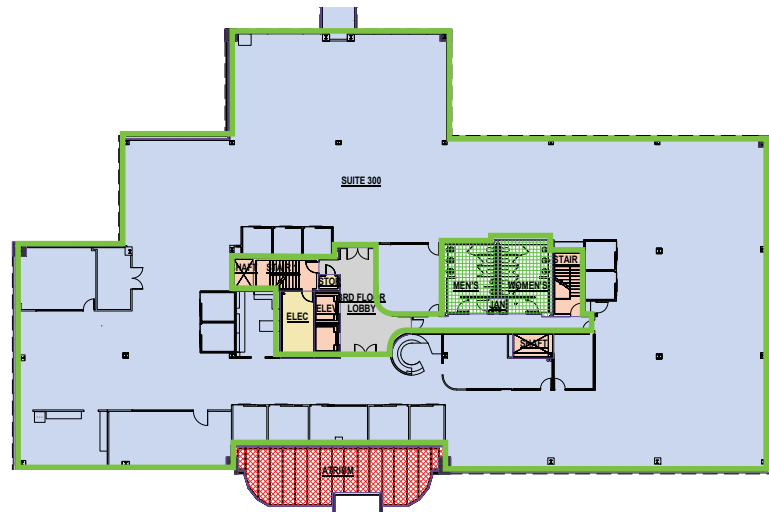
PROPERTY DETAILS

LEASE RATE: \$23.50/RSF FULL SERVICE

- + ±56,738 Total SF
 - + 3 Floors
 - + On-site Fitness Center & Tenant Lounge
 - + Located in Greenville County only
 - + Excellent exposure from I-385
 - + Parking: 4/1,000 RSF
- + Leasing Opportunities:
 - ±1,916 SF | Suite 115
 - ±3,115 SF | Suite 150
 - ±994 SF | Suite 153
 - ±21,430 SF | Suite 300



FIRST FLOOR | SUITE 115 | ±1,916 SF
 SUITE 150 | ±3,115 SF
 SUITE 153 | ±994 SF



THIRD FLOOR | SUITE 300 | ±21,430 SF

AVAILABLE

© 2017 CBRE, Inc. All rights reserved. This information has been obtained from sources believed reliable, but has not been verified for accuracy or completeness. Any projections, opinions, or estimates are subject to uncertainty. The information may not represent the current or future performance of the property. You and your advisors should conduct a careful, independent investigation of the property and verify all information. Any reliance on this information is solely at your own risk. CBRE and the CBRE logo are service marks of CBRE, Inc. and/or its affiliated or related companies in the United States and other countries. All other marks displayed on this document are the property of their respective owners. Photos herein are the property of their respective owners and use of these images without the express written consent of the owner is prohibited.